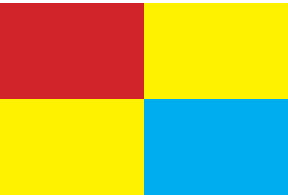




# WELCOME TO THE LGBT CENTER

The Center is a gathering place for Penn's LGBTQ and ally community. Through outreach, education, and advocacy, we provide support for students, faculty, staff, alumni, and campus organizations. Whether you are questioning your sexual orientation or gender identity, trying to figure out which LGBTQ organization to join, just want to check in after a stressful week, or chat about current events, we are here for you!



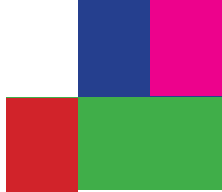
# YOU CONNECT

The Center is YOUR space. You can hang out with friends, play video games, or find a quiet place to study. Many students appreciate being able to work – and print – for free in the CyberCenter (BYO paper!). Our modern, open spaces can be reserved by students for events for no charge during business hours and for a nominal fee when we are closed. Think about the Center as your community connection. Our staff work closely with other cultural resource centers, academic departments, student affairs staff, and off-campus agencies. We're here to discuss whatever is on your mind and help you make the most of your time at Penn.



# YOU LEARN

We are all continually learning. At the Center, this may be through our peer-to-peer Mentor Program where students – questioning, recently out, or new to Penn – are connected with a trained LGBTQ student mentor. Students also can expand their perspectives through lectures, panel discussions, and informal conversations, or by borrowing books and films from our Reading Room. The Center maintains a close relationship with Gender, Sexuality, and Women's Studies (GSWS), cosponsoring many events including Gender and Sexuality Works in Progress (GASWorks), as well as consulting with faculty and students about academic projects.



# YOU INSPIRE

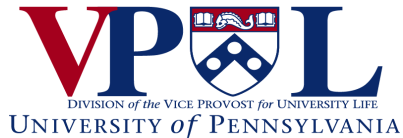
The Center is home to 20+ undergraduate, graduate, and professional LGBT-specific student groups. Some are school-based, such as the Wharton Alliance and Lambda Law. Others are interest-based such as Penn Non-Cisgender, Queer People of Color, and Queer Muslims and Allies at Penn. These organizations celebrate our students' multiple identities through collaborative programming and events. See our website for a complete list.



LESBIAN  
GAY  
BISEXUAL  
TRANSGENDER  
CENTER

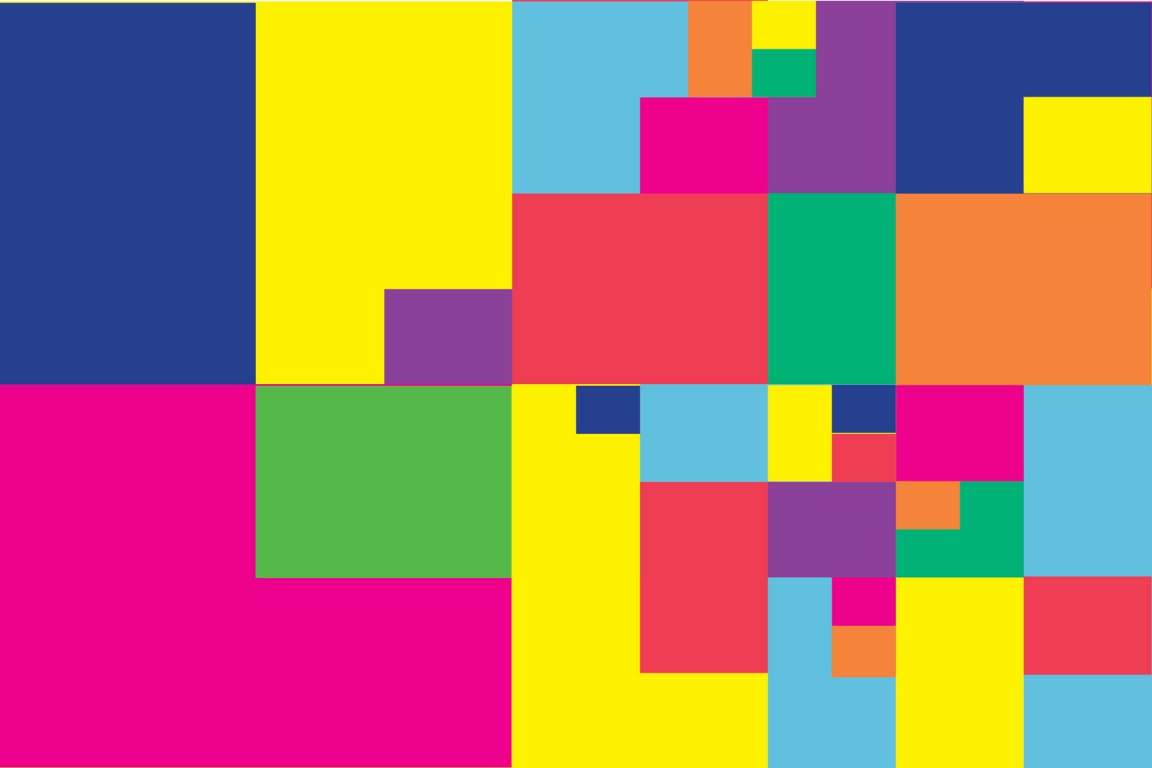
HOURS

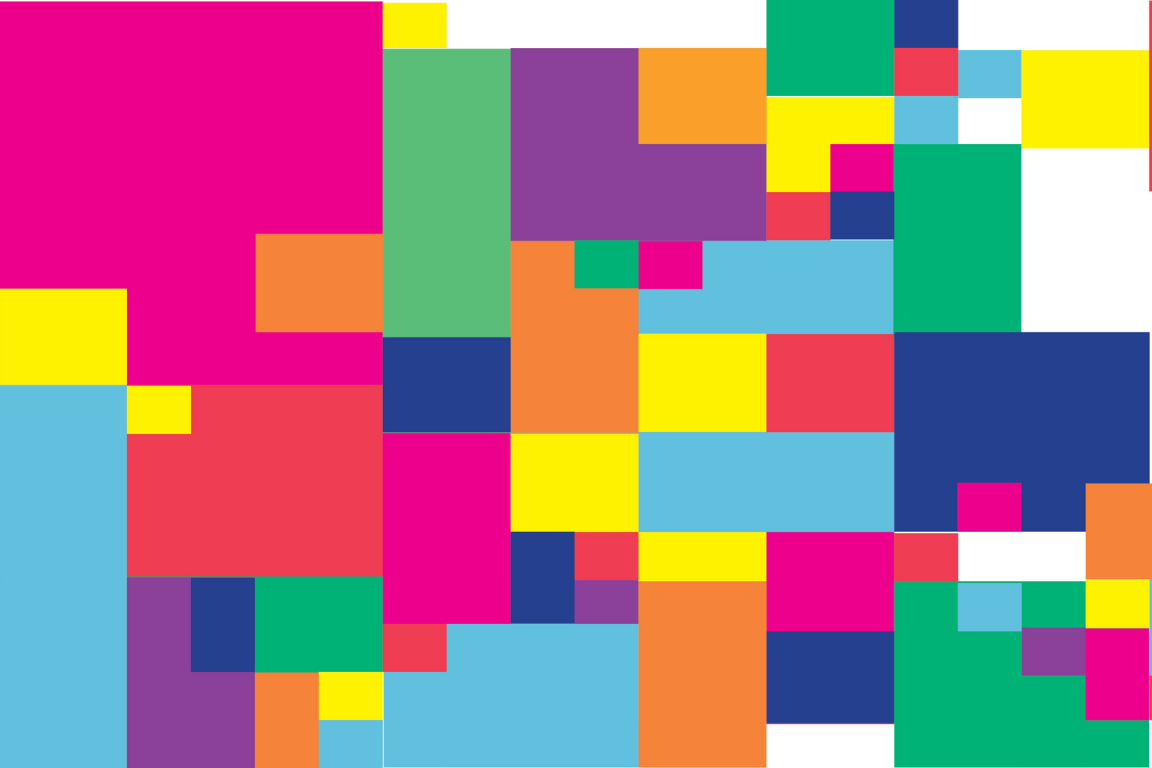
M-Th 10:00 AM-10:00 PM  
F 10:00 AM-5:00 PM  
Sa 12:00 PM-6:00 PM  
Su 12:00 PM-8:00 PM



University of Pennsylvania  
3907 Spruce Street  
Philadelphia, PA 19104-6031

[center@pobox.upenn.edu](mailto:center@pobox.upenn.edu)  
[www.vpul.upenn.edu/lgbtc](http://www.vpul.upenn.edu/lgbtc)  
[facebook.com/Pennlgbtc](https://www.facebook.com/Pennlgbtc)  
Instagram @PennLGBT  
Twitter @PennLGBTC







# YOU BE

UNIVERSITY OF PENNSYLVANIA LESBIAN G







**E  
L O N G**

**AY BISEXUAL TRANSGENDER CENTER**





penn  
**lgbt**  
center

*you  
belong*